

PROGRAM LEARNING OUTCOMES

TEXTBOOKS, RECOMMENDED READINGS AND CLASS BIBLIOGRAPHY

Required:

The Family,
People Skills.
Forgiving Our Parents Forgiving Ourselves.

Recommended:

God, Marriage, and Family.
Genograms Assessment and
Intervention.
Premarital and Remarital Counseling.
Forgive to Live: How Forgiveness Can Save Your Life.

Class Bibliography:

The 16PF: Personality in Depth.
Broken Walls.
Women in Ministry.

GRADING CRITERIA AND COURSE ASSESSMENT

Criteria for Grades

ninety percentage points

ten percentage points

Passing Grades

strongly advised to consult the rubrics

Portfolio Submission

DUE DATE

May 1st 2018.

hard copy only

EMAIL SUBMISSIONS WILL NOT BE ACCEPTED!

GRADING CRITERIA AND COURSE ASSESSMENT

Late Submission

TOTAL TIME INVESTMENT FOR THIS COURSE

135 hours for a 3-credit course.

Pre-Intensive Requirements

**All class attendees must take the test before
they arrive for the intensive
do not need to re-take the test**

TOPICS AND ASSIGNMENTS

Day	Date	
-----	------	--

Day	Date	Class Topic	Assessment
M O N D A Y A F T E R N O O N	Class 10	<p>Focus is on Portfolio Section 3 <i>Love and Work</i></p>	

M
O
N
D
A
Y

A
F
T
E
R
N
O
O
N

Class 11

Focus is on Portfolio Section 3



Day	Date	Class Topic	Assessment
T U E S D A Y A F T E R N O O N	Class 19	Focus is on Portfolio Section 3 <i>Blue-Eyed</i>	
	Class 20	Focus is on Portfolio Section 2	
	Class 21	Focus is on Portfolio Section 2	

Day	Date	Class Topic	Assessment
T H U R S D A Y A F T E R N O O N	Class 37	Focus is on Portfolio Section 4	
	Class 38	Focus is on Portfolio Section 4	
	Class 39	Focus is on Portfolio Section 3	
	Class 40	Focus is on Recapitulation	
		F A R E W E L L	

CLASS POLICIES

Attendance and Punctuality

Bulletin

Academic Integrity

Disability Accommodations

Use of Technology

Relationship-building within the class setting

Emergency Protocols

COURSE REQUIREMENTS

Portfolio Section 1

the specific steps

NOTE:



SEE THE GRADING RUBRIC ON THE NEXT PAGE

GRADING RUBRIC FOR PORTFOLIO SECTION 1

Elements

Exceptional

Proficient

Emerging

Unsatisfactory

Points

COURSE REQUIREMENTS

Portfolio Section 3

five persons

each person

GRADING RUBRIC FOR PORTFOLIO SECTION 3

Elements Three Generational Genogram	Exceptional	Proficient	Emerging	Unsatisfactory	Points	Percent
---	--------------------	-------------------	-----------------	-----------------------	---------------	----------------

COURSE REQUIREMENTS

Portfolio Section 4

—
focus on the personal and professional benefits



NOTE:



GRADING RUBRIC FOR PORTFOLIO SECTION 4

Elements	Exceptional	Proficient	Emerging	Unsatisfactory	Points	Percent
<i>The Family</i> by Balswick & Balswick						

COURSE REQUIREMENTS

Portfolio Section 5

Program Learning Outcomes

NOTE:

a separate report

five times

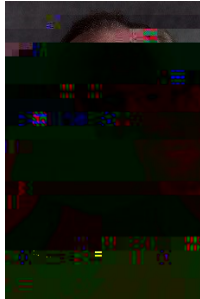
NOTE:

GRADING RUBRIC FOR PORTFOLIO SECTION 5

Elements	Exceptional	Proficient	Emerging	Unsatisfactory	Points	Percent
Attempts to integrate your three chosen principles into all your relationships						
Relationships developed with difficult, disabled, and culturally different people						

What you learned about premarital preparation

INSTRUCTOR PROFILE



Education

Pastoral Effectiveness: A Study of Differences among Comparison Groups of Seventh-day Adventist Clergy

Experience

Professional Memberships, Licensure, and Ordination
